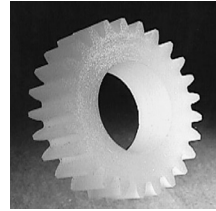
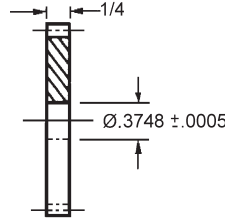
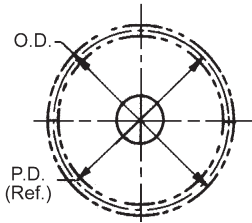


SPUR GEARS

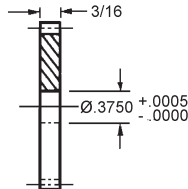
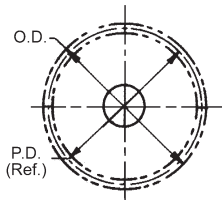
PITCH	STYLE	BORE	FACE	MATERIAL	AGMA QUALITY	PRESSURE ANGLE
24	HUBLESS	3/8"	1/4"	POLYURETHANE	8	20°



STOCK NO.	NO. OF TEETH	PITCH DIA.	OUTSIDE DIA.
F24U6-24	24	1.0000	1.083
F24U6-30	30	1.2500	1.333
F24U6-32	32	1.3333	1.416
F24U6-36	36	1.5000	1.583
F24U6-42	42	1.7500	1.833
F24U6-48	48	2.0000	2.083
F24U6-60	60	2.5000	2.583
F24U6-64	64	2.6666	2.750
F24U6-72	72	3.0000	3.083
F24U6-96	96	4.0000	4.083

Available on request:
Other numbers of teeth,
14-1/2° Pressure Angle.

PITCH	STYLE	BORE	FACE	MATERIAL	AGMA QUALITY	PRESSURE ANGLE
24	HUBLESS	3/8"	3/16"	DELFIN	10	20°



STOCK NO.	NO. OF TEETH	PITCH DIA.	OUTSIDE DIA.
F24D5-15	15	.6250	.708
F24D5-16	16	.6666	.750
F24D5-17	17	.7083	.791
F24D5-18	18	.7500	.833
F24D5-19	19	.7916	.875
F24D5-20	20	.8333	.916
F24D5-21	21	.8750	.958
F24D5-22	22	.9166	1.000
F24D5-23	23	.9583	1.041
F24D5-24	24	1.0000	1.083
F24D5-25	25	1.0416	1.125
F24D5-28	28	1.1666	1.250
F24D5-30	30	1.2500	1.333
F24D5-32	32	1.3333	1.416
F24D5-33	33	1.3750	1.458
F24D5-36	36	1.5000	1.583
F24D5-40	40	1.6666	1.750
F24D5-42	42	1.7500	1.833
F24D5-45	45	1.8750	1.958
F24D5-46	46	1.9166	2.000
F24D5-48	48	2.0000	2.083
F24D5-50	50	2.0833	2.166
F24D5-52	52	2.1666	2.250
F24D5-55	55	2.2916	2.375
F24D5-56	56	2.3333	2.416
F24D5-57	57	2.3750	2.458
F24D5-60	60	2.5000	2.583
F24D5-64	64	2.6666	2.750
F24D5-66	66	2.7500	2.833
F24D5-69	69	2.8750	2.958
F24D5-72	72	3.0000	3.083
F24D5-78	78	3.2500	3.333
F24D5-84	84	3.5000	3.583
F24D5-90	90	3.7500	3.833
F24D5-93	93	3.8750	3.958

Available on request:
Other numbers of teeth
14 - 1/2° Pressure Angle

